

MINIBLUE^R



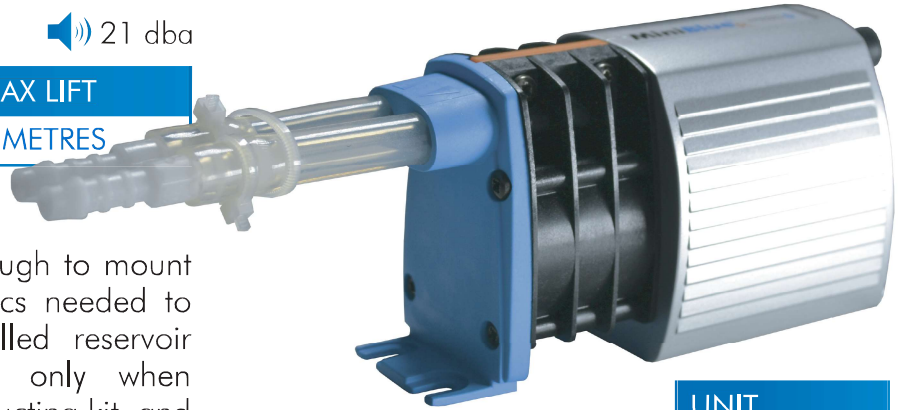
3 YEAR
WARRANTY

PERFORMANCE

21 dba

MAX FLOW	MAX HEAD	MAX LIFT
8 L/ HOUR	8 METRES	5 METRES

The MINIBLUE^R has been designed to combine performance, reliability and installation flexibility. Compact enough to mount remotely and incorporate the electronics needed to operate the unique thermistor controlled reservoir sensor, the MINIBLUE^R operates only when condensate is present. Supplied with a ducting kit and dedicated elbow kit to secure our fault free reservoir.



UNIT
3.5-8 KW

SENSING OPTION

MINIBLUE[®] pump available with:

DUCTING KIT	RESERVOIR
X87-507	X87-509
COLOUR: RAL. 9002	



NO
MAINTENANCE

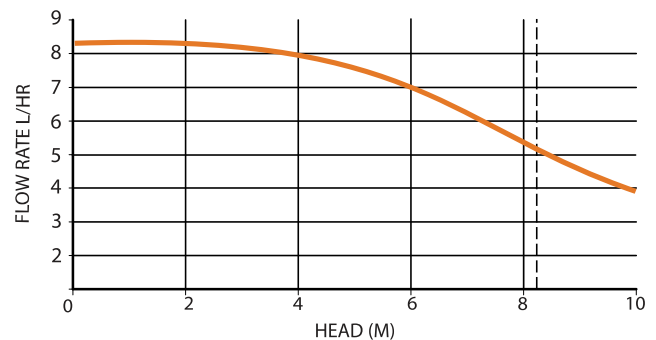
No servicing, no maintenance, no replacement parts. Nothing! A true fit and forget condensate pump.



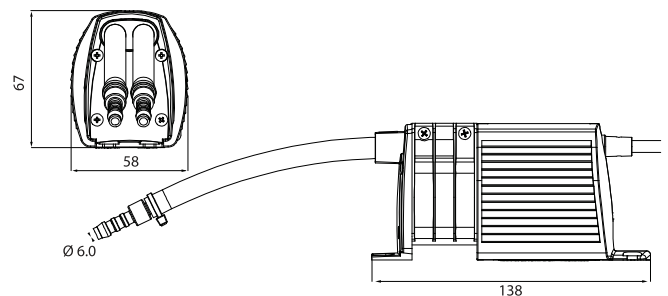
QUICK
INSTALLATION

Non modular installation with minimum components when setting up. Fewer components means less time wasted on installation. No siphoning devices or check valves required.

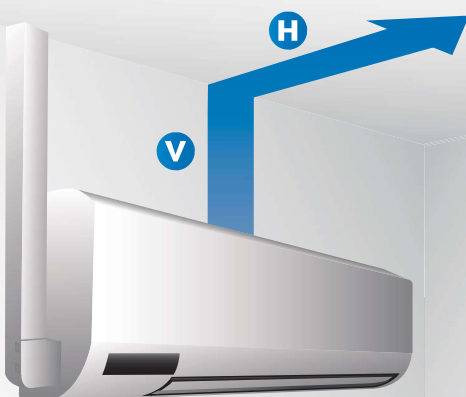
PERFORMANCE



DIMENSIONS (MM)



DISCHARGE PIPE RUN



*8 KW MAX

V (VERTICAL)	H (HORIZONTAL)
8 M	0 M
7 M	3 M
6 M	6 M
5 M	9 M
4 M	12 M
3 M	15 M
2 M	18 M
1 M	21 M

The MINIBLUE[®] R can be mounted in any orientation up to 5m away from the A.C